

# 製品情報

## Closed Guide Bush N553

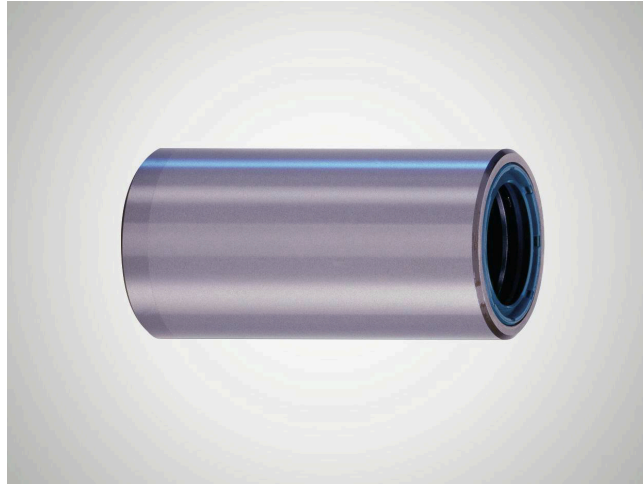
### Suitability

Design as for N 550, with sealing and stop rings fixed on both sides.

- When used in combination with shaft diameter  $d_w$  ISO-h3, preloading of the rotary stroke bearing is guaranteed.
- Guide bush N 553 is designed for use in dirty environments.
- The sealing rings prevent any dirt particles from penetrating. (The rubbing action of the sealing rings on the shaft affects the smooth running of the rotary stroke bearing slightly.)
- Secure path limitation for the ball cage is ensured.

### Features

- Sealing and stop rings fixed on both sides.
- The closed guide bush and integrated ball cage form a separate component. Guide bore diameter  $d_1$  is finely honed to ISO tolerance IT 3,  $R_z$  0.5 – 1.5  $\mu\text{m}$  depending on diameter.
- Roundness within 1/3 ISO-IT 3.
- Cylindricity within IT 1.
- Radial run-out of a shaft inserted under preloading is within 0.0005 mm.
- Outside diameter  $d_B$  n4 with radial run-out error within IT 4, ground to guide bore diameter  $d_1$ , lead-in taper on one side.
- The maximum stroke path  $H_{\text{max}}$  of the rotary stroke bearing is determined from the length of guide bush  $l_3$  and the length of the ball cage  $l_2$ :  $H_{\text{max}} = 2 (l_3 - l_2)$ .
- See catalog page 37-41 for instructions on installation and servicing.



品目番号 5009112

### 技術データ

material	Steel
material number	1.3505 (AISI E52 100)
heat treatment	through-hardened
constant working temperature	100

### 寸法

shaft diameter ( $d_w$ )	32
Inner diameter of guide bush ( $d_1$ )	40
Length of guide bush with sealing ( $L$ )	82
Length of guide bush ( $l_1/L$ )	82
Inner dimension of guide bush ( $l_3$ )	67
Outer diameter of guide bush ( $d_B$ )	48
outer diameter tolerance	n4

