

製品情報

Closed Guide Bush N553

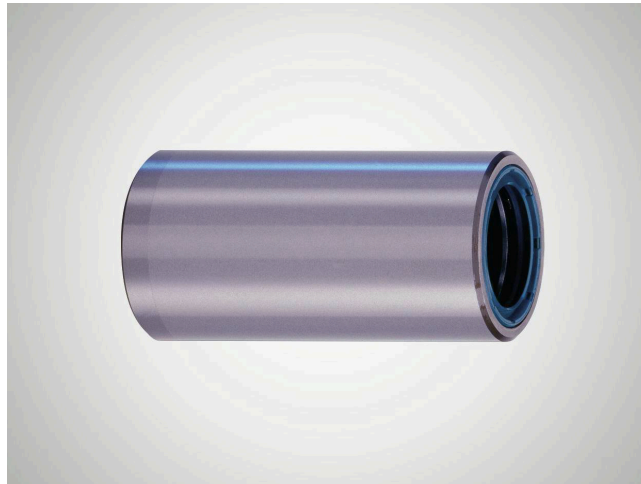
Suitability

Design as for N 550, with sealing and stop rings fixed on both sides.

- When used in combination with shaft diameter d_w ISO-h3, preloading of the rotary stroke bearing is guaranteed.
- Guide bush N 553 is designed for use in dirty environments.
- The sealing rings prevent any dirt particles from penetrating. (The rubbing action of the sealing rings on the shaft affects the smooth running of the rotary stroke bearing slightly.)
- Secure path limitation for the ball cage is ensured.

Features

- Sealing and stop rings fixed on both sides.
- The closed guide bush and integrated ball cage form a separate component. Guide bore diameter d_1 is finely honed to ISO tolerance IT 3, R_z 0.5 – 1.5 μm depending on diameter.
- Roundness within 1/3 ISO-IT 3.
- Cylindricity within IT 1.
- Radial run-out of a shaft inserted under preloading is within 0.0005 mm.
- Outside diameter d_B n4 with radial run-out error within IT 4, ground to guide bore diameter d_1 , lead-in taper on one side.
- The maximum stroke path H_{max} of the rotary stroke bearing is determined from the length of guide bush l_3 and the length of the ball cage l_2 : $H_{\text{max}} = 2 (l_3 - l_2)$.
- See catalog page 37-41 for instructions on installation and servicing.



品目番号 5009055

技術データ

material	Steel
material number	1.3505 (AISI E52 100)
heat treatment	through-hardened
constant working temperature	100

寸法

shaft diameter (d_w)	8
Inner diameter of guide bush (d_1)	13
Length of guide bush with sealing (L)	38
Length of guide bush (l_1/L)	38
Inner dimension of guide bush (l_3)	28
Outer diameter of guide bush (d_B)	18
outer diameter tolerance	n4

