

製品情報

Closed Guide Bush N570

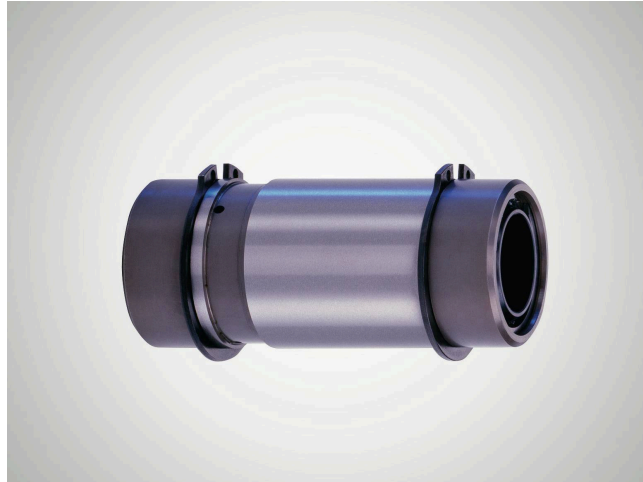
Suitability

Particularly thick-walled and robust design with wiper seals.

- When used in combination with shaft diameter dw ISO-h3, preloading of the rotary stroke bearing is guaranteed.
- Primarily used in mechanical engineering applications or where conditions require wiper seals to be employed.
- The wiper seals prevent any penetration of dirt particles, even in the dirtiest working conditions. (The rubbing action of the wiper seals on the shaft affects the smooth running of the rotary stroke bearing slightly.)
- Three radial bores permit lubrication during operation. Circlips DIN 471 on outside diameter dB permit easy installation in the location bore.
- Stop rings fastened with snap rings ensure the ball cage path is effectively limited.

Features

- Stop rings and wiper seals fixed on both sides.
- The closed guide bush and integrated ball cage form a separate component.
- Guide bore diameter d1 is finely honed to ISO tolerance IT 3, Rz 0.5 – 1.5 µm depending on diameter.
- Roundness within 1/3 ISO-IT 3.
- Cylindricity within IT 1.
- Radial run-out of a shaft inserted under preloading is within 0.0005 mm.
- Outside diameter dB h6 with radial run-out error within IT 4, ground to guide bore diameter d1.
- Outside diameter with circlips DIN 471 for installation of the guide bush in the location bore.
- The maximum stroke path Hmax is determined from the length of the guide bush l3 and the length of the ball cage l2: $H_{max} = 2 \cdot l_3$



品目番号 5009033

技術データ

| | |
|------------------------------|-----------------------|
| material | Steel |
| material number | 1.3505 (AISI E52 100) |
| heat treatment | through-hardened |
| constant working temperature | 100 |

寸法

| | |
|------------------------------------|-----|
| shaft diameter (dw) | 100 |
| Inner diameter of guide bush (d1) | 112 |
| Length of guide bush (l1/L) | 355 |
| Inner dimension of guide bush (l3) | 320 |
| Outer diameter of guide bush (dB) | 140 |
| outer diameter tolerance | h6 |
| e | 310 |
| m | 15 |
| n | 36 |

