

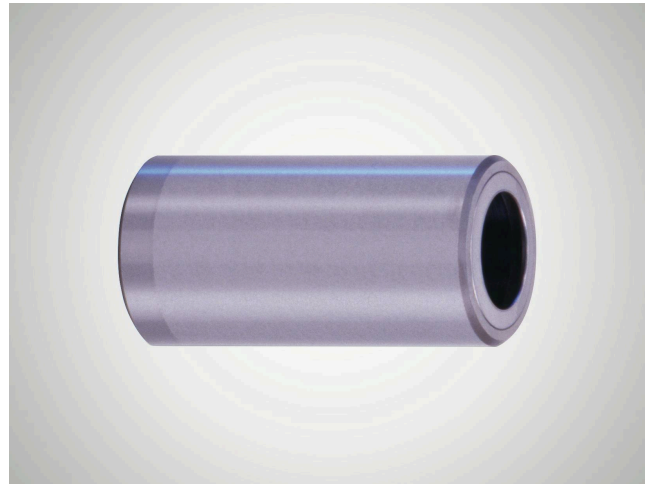
製品情報

Closed Guide Bush N552

Suitability

Design as for N 550, with stop rings fixed on both sides for use with Mini Range ball cage N 502.

- Minimal installation space when used with Mini Range ball cages N 502.
- When used in combination with shaft diameter d_w ISO-h3, preloading of therotary stroke bearing is guaranteed.
- The stop rings ensure the cage is effectively restricted for linear and rotarymovements.
- Smooth running of the rotary stroke bearing is not impaired by the stop rings.



品目番号 5003064

技術データ

Features

- Stop rings fixed on both sides.
- The closed guide bush and integrated ball cage form a separate component.
- Guide bore diameter d_1 is finely honed to ISO tolerance IT 3, Rz 0.5 – 1.5 μ m depending on diameter.
- Roundness within 1/3 ISO-IT 3.
- Cylindricity within IT 1.
- Radial run-out of a shaft inserted under preloading is within 0.0005 mm.
- Outside diameter d_B n4 with radial run-out error within IT 4, ground to guide bore diameter d_1 , lead-in taper on one side.
- The maximum stroke path H_{max} is determined from the length of guide bush l_3 and the length of the ball cage l_2 : $H_{max} = 2 (l_3 - l_2)$.
- See catalog page 37-41 for instructions on installation and servicing.

material	Steel
material number	1.3505 (AISI E52 100)
heat treatment	through-hardened
constant working temperature	150

寸法

shaft diameter (d_w) - Mini	14
Inner diameter of guide bush (d_1)	17
Length of guide bush (l_1/L)	50
Inner dimension of guide bush (l_3)	47
Outer diameter of guide bush (d_B)	22
outer diameter tolerance	n4

