

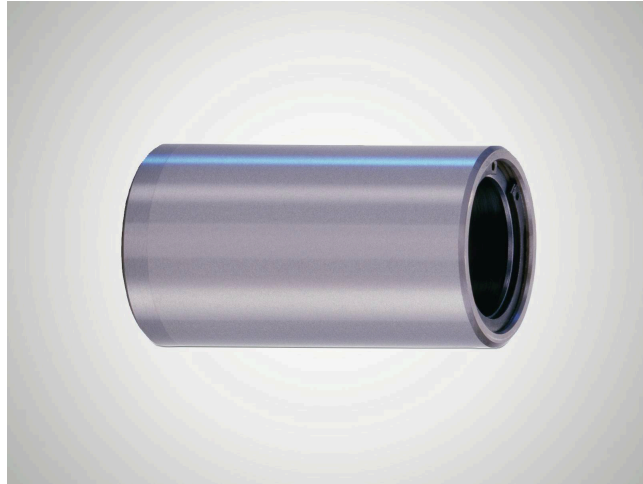
# 製品情報

## Closed Guide Bush N552

### Suitability

Design as for N 550, with stop rings fixed on both sides.

- When used in combination with shaft diameter  $d_w$  ISO-h3, preloading of the rotary stroke bearings is guaranteed.
- The stop rings ensure the cage is effectively restricted for linear and rotary movements.
- Smooth running of the rotary stroke bearing is not impaired by the stop rings.



品目番号 5003051

### Features

- Stop rings fixed on both sides.
- The closed guide bush and integrated ball cage form a separate component.
- Guide bore diameter  $d_1$  is finely honed to ISO tolerance IT 3, Rz 0.5 – 1.5  $\mu\text{m}$  depending on diameter.
- Roundness within 1/3 ISO-IT 3.
- Cylindricity within IT 1.
- Radial run-out of a shaft inserted under preloading is within 0.0005 mm.
- Outside diameter  $d_B$  n4 with radial run-out error within IT 4, ground to guide bore diameter  $d_1$ , lead-in taper on one side.
- The maximum stroke path  $H_{\text{max}}$  is determined from the length of guide bush  $l_3$  and the length of the ball cage  $l_2$ :  $H_{\text{max}} = 2 (l_3 - l_2)$ .
- See catalog page 37-41 for instructions on installation and servicing.

### 技術データ

|                              |                       |
|------------------------------|-----------------------|
| material                     | Steel                 |
| material number              | 1.3505 (AISI E52 100) |
| heat treatment               | through-hardened      |
| constant working temperature | 150                   |

### 寸法

|   |    |
|---|----|
| shaft diameter ( $d_w$ )                | 10 |
| Inner diameter of guide bush ( $d_1$ )  | 15 |
| Length of guide bush ( $l_1/L$ )        | 36 |
| Inner dimension of guide bush ( $l_3$ ) | 33 |
| Outer diameter of guide bush ( $d_B$ )  | 20 |
| outer diameter tolerance                | n4 |

