

製品情報

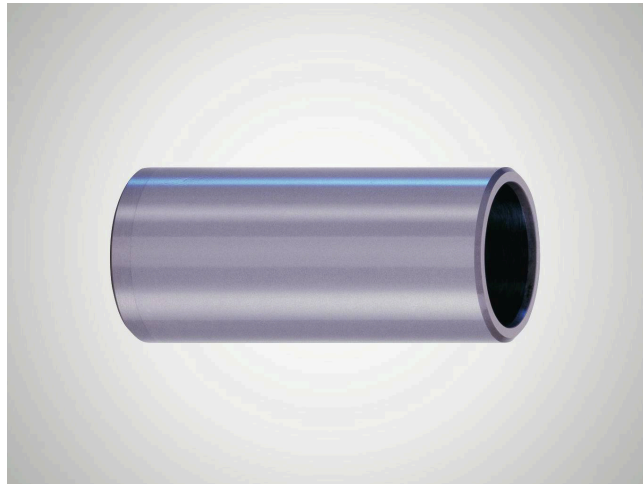
Open Guide Bush N550

Suitability

Open guide bush with tapered inside edges on both sides.

- Allows universal use.
- When used in combination with shaft diameter dw ISO-h3, preloading of the rotary stroke bearing is guaranteed.
- The ball cage can project out of the guide bush on both sides to permit longer stroke paths (note minimum contact length).
- Minimal installation space when used with Mini Range ball cages N 502.

品目番号 5002047



技術データ

Features

- Guide bore diameter d1 is finely honed to ISO tolerance IT 3, Rz 0.5 – 1.5 µm depending on diameter.
- Roundness within 1/3 ISO-IT 3.
- Cylindricity within IT 1.
- Radial run-out of a shaft inserted under preloading is within 0.0005 mm.
- Tapered inside edges on both sides ensure smooth running.
- Outside diameter dB n4 with radial run-out error within IT 4, ground to guide bore diameter d1 lead-in taper on one side.
- See catalog page 37-41 for instructions on installation and servicing.

| | |
|-----------------|-----------------------|
| material | Steel |
| material number | 1.3505 (AISI E52 100) |
| heat treatment | through-hardened |

寸法

| | |
|-----------------------------------|-----|
| shaft diameter (dw) | 40 |
| Inner diameter of guide bush (d1) | 48 |
| Length of guide bush (l1/L) | 90 |
| Outer diameter of guide bush (dB) | 60 |
| constant working temperature | 150 |
| outer diameter tolerance | n4 |

