

# 製品情報

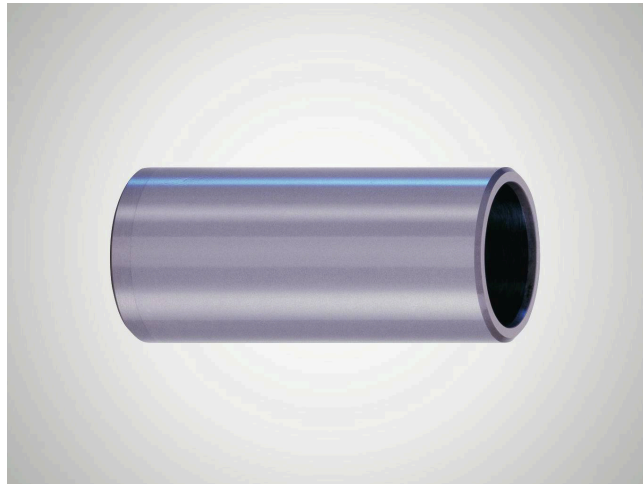
## Open Guide Bush N550

### Suitability

Open guide bush with tapered inside edges on both sides.

- Allows universal use.
- When used in combination with shaft diameter dw ISO-h3, preloading of the rotary stroke bearing is guaranteed.
- The ball cage can project out of the guide bush on both sides to permit longer stroke paths (note minimum contact length).
- Minimal installation space when used with Mini Range ball cages N 502.

品目番号 5002018



### 技術データ

#### Features

- Guide bore diameter d1 is finely honed to ISO tolerance IT 3, Rz 0.5 – 1.5 µm depending on diameter.
- Roundness within 1/3 ISO-IT 3.
- Cylindricity within IT 1.
- Radial run-out of a shaft inserted under preloading is within 0.0005 mm.
- Tapered inside edges on both sides ensure smooth running.
- Outside diameter dB n4 with radial run-out error within IT 4, ground to guide bore diameter d1 lead-in taper on one side.
- See catalog page 37-41 for instructions on installation and servicing.

material	Steel
material number	1.3505 (AISI E52 100)
heat treatment	through-hardened
constant working temperature	150

### 寸法

shaft diameter (dw)	16
Inner diameter of guide bush (d1)	22
Length of guide bush (l1/L)	45
Outer diameter of guide bush (dB)	28
constant working temperature	150
outer diameter tolerance	n4
shaft diameter (dw) - Mini	18

