

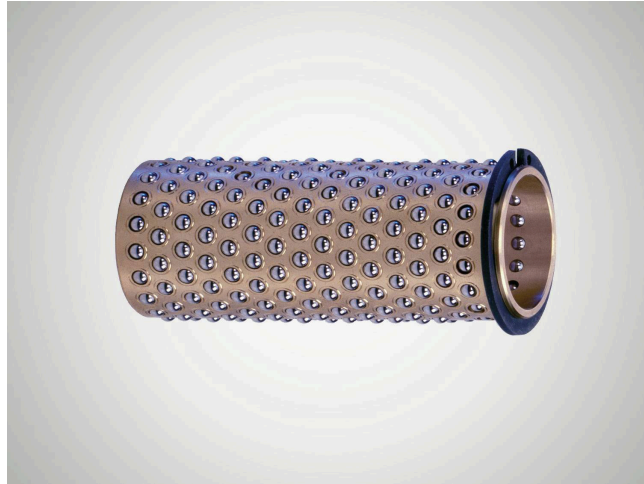
# 製品情報

## Brass Ball Cage N511

### Suitability

Brass ball cage with steel balls and circlip for path limitation.

- Provides an optimum combination of smooth running and long service life.
- High loading capacity due to large number of balls.
- Particularly suitable for linear movements in tools and machines which require high precision.
- Reliable ball cage path limitation using circlip.



品目番号 5001153

### Features

- The ball chambers are mechanically caulked so that the balls remain captive but still move easily.
- Large number of balls ensures high loading capacity.
- Brass offers high mechanical stability, optimum sliding properties, and high resistance to abrasion and heat.
- See catalog page 37-41 for instructions on installation and servicing.

### 技術データ

material	Brass
material number	2.0402 (CuZn40Pb2)
ball material	roller bearing steel
number of balls	288
C - Load rating (radial)	5400
max. torque	82.14
ball arrangement	arranged in rows
constant working temperature	150

### 寸法

shaft diameter (dw)	30
Inner diameter of guide bush (d1)	38
Length of ball cage (l2)	90
distance circlip (f)	4.8
distance 1. ball (l4)	4.75
ball diameter (k)	4

