

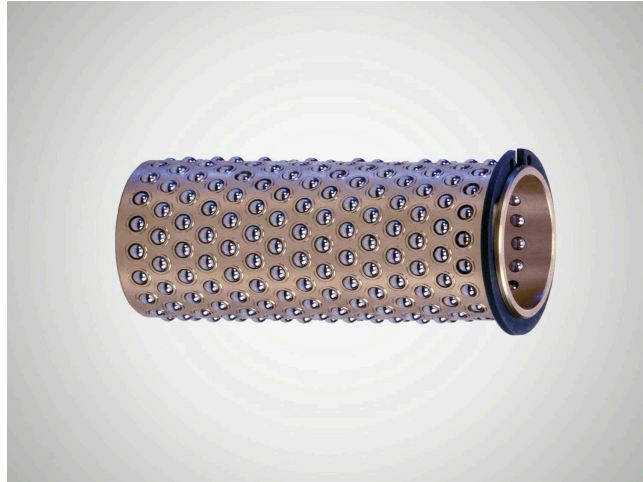
製品情報

Brass Ball Cage N511

Suitability

Brass ball cage with steel balls and circlip for path limitation.

- Provides an optimum combination of smooth running and long service life.
- High loading capacity due to large number of balls.
- Particularly suitable for linear movements in tools and machines which require high precision.
- Reliable ball cage path limitation using circlip.



品目番号 5001147

Features

- The ball chambers are mechanically caulked so that the balls remain captive but still move easily.
- Large number of balls ensures high loading capacity.
- Brass offers high mechanical stability, optimum sliding properties, and high resistance to abrasion and heat.
- See catalog page 37-41 for instructions on installation and servicing.

技術データ

| | |
|------------------------------|----------------------|
| material | Brass |
| material number | 2.0402 (CuZn40Pb2) |
| ball material | roller bearing steel |
| number of balls | 342 |
| C - Load rating (radial) | 4070 |
| max. torque | 52.12 |
| ball arrangement | arranged in rows |
| constant working temperature | 150 |

寸法

| | |
|-----------------------------------|-----|
| shaft diameter (dw) | 25 |
| Inner diameter of guide bush (d1) | 31 |
| Length of ball cage (l2) | 84 |
| distance circlip (f) | 2.8 |
| distance 1. ball (l4) | 4.2 |
| ball diameter (k) | 3 |

