

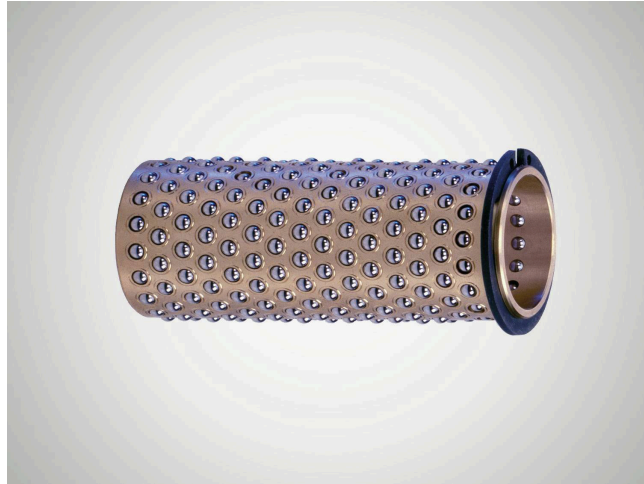
製品情報

Brass Ball Cage N511

Suitability

Brass ball cage with steel balls and circlip for path limitation.

- Provides an optimum combination of smooth running and long service life.
- High loading capacity due to large number of balls.
- Particularly suitable for linear movements in tools and machines which require high precision.
- Reliable ball cage path limitation using circlip.



品目番号 5001141

Features

- The ball chambers are mechanically caulked so that the balls remain captive but still move easily.
- Large number of balls ensures high loading capacity.
- Brass offers high mechanical stability, optimum sliding properties, and high resistance to abrasion and heat.
- See catalog page 37-41 for instructions on installation and servicing.

技術データ

material	Brass
material number	2.0402 (CuZn40Pb2)
ball material	roller bearing steel
number of balls	270
C - Load rating (radial)	3210
max. torque	34.75
ball arrangement	arranged in rows
constant working temperature	150

寸法

shaft diameter (dw)	24
Inner diameter of guide bush (d1)	30
Length of ball cage (l2)	70
distance circlip (f)	2.8
distance 1. ball (l4)	3.9
ball diameter (k)	3

