

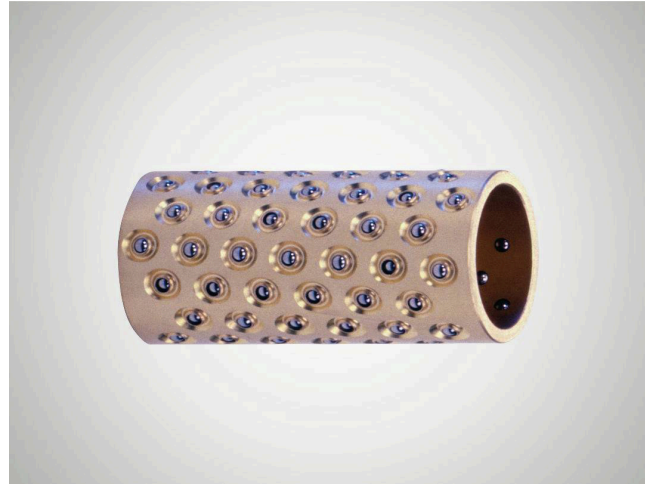
# 製品情報

## Brass Ball Cage N502

### Suitability

Brass ball cage with steel balls arranged in helical formation for use with guide bushes from the Mini Range.

- The »Mini Range« was specifically developed for the precision engineering and optical industries.
- Uses smaller balls than type N 501.
- Smaller installation space by the use in combination with guide bushes from the Mini Range.
- The helical arrangement of the balls is ideal for linear and rotary movements.



品目番号 5000265

### 技術データ

#### Features

- The ball chambers are mechanically caulked so that the balls remain captive but still move easily.
- The balls are arranged in an optimum formation so that each ball can run on its own track for both linear and rotary movements.
- The ball formation ensures smooth running and substantially lengthens the service life of the rotary stroke bearing.
- Brass offers high mechanical stability, optimum sliding properties, and high resistance to abrasion and heat.
- See catalog page 37-41 for instructions on installation and servicing.

|                                   |                     |
|-----------------------------------|---------------------|
| material                          | Brass               |
| material number                   | 2.0402 (CuZn40Pb2)  |
| ball material                     | stainless steel     |
| number of balls                   | 134                 |
| C - Load rating (radial)          | 258                 |
| max. torque                       | 5.18                |
| ball arrangement                  | helical arrangement |
| constant working temperature      | 150                 |
| max. rotary speed, rotating shaft | 44850               |
| max. rotary speed, rotating bush  | 34500               |

### 寸法

|                                   |     |
|-----------------------------------|-----|
| shaft diameter (dw) - Mini        | 10  |
| Inner diameter of guide bush (d1) | 13  |
| Length of ball cage (l2)          | 50  |
| ball diameter (k)                 | 1.5 |

