

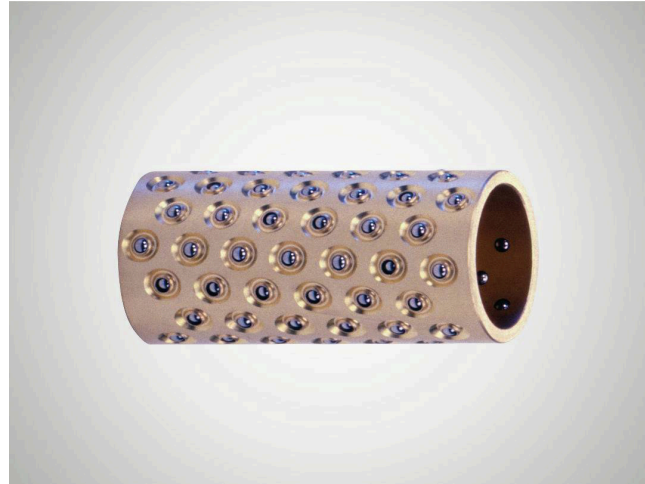
製品情報

Brass Ball Cage N502

Suitability

Brass ball cage with steel balls arranged in helical formation for use with guide bushes from the Mini Range.

- The »Mini Range« was specifically developed for the precision engineering and optical industries.
- Uses smaller balls than type N 501.
- Smaller installation space by the use in combination with guide bushes from the Mini Range.
- The helical arrangement of the balls is ideal for linear and rotary movements.



品目番号 5000238

技術データ

Features

- The ball chambers are mechanically caulked so that the balls remain captive but still move easily.
- The balls are arranged in an optimum formation so that each ball can run on its own track for both linear and rotary movements.
- The ball formation ensures smooth running and substantially lengthens the service life of the rotary stroke bearing.
- Brass offers high mechanical stability, optimum sliding properties, and high resistance to abrasion and heat.
- See catalog page 37-41 for instructions on installation and servicing.

material	Brass
material number	2.0402 (CuZn40Pb2)
ball material	stainless steel
number of balls	38
C - Load rating (radial)	11
max. torque	0.09
ball arrangement	helical arrangement
constant working temperature	150
max. rotary speed, rotating shaft	132000
max. rotary speed, rotating bush	80490

寸法

shaft diameter (dw) - Mini	2.5
Inner diameter of guide bush (d1)	4.1
Length of ball cage (l2)	15
ball diameter (k)	0.8

